

nearshore; possible multiple uses of the proposed leasing area (including navigation, recreation, and fisheries); and other socioeconomic, biological, and environmental matters. In response to the Call, potential lessees submit the following information: the area of interest for a possible lease; a general description of the potential lessee's objectives and the facilities that the potential lessee would use to achieve those objectives; a general schedule of proposed activities, including those leading to commercial operations; data and information concerning renewable energy and environmental conditions in the area of interest, including the energy and resource data and information used to evaluate the area of interest; and documentation showing the potential lessee is qualified to hold a lease. However, a potential lessee is not required to resubmit information it has already submitted in response to this RFI.

(2) *Area Identification*: Based on the information received in response to the RFI and Call, BOEM will determine the level of commercial interest and identify the areas that are appropriate to analyze for potential leasing. Those areas will constitute wind energy areas (WEA) and will be subject to environmental analysis in consultation with appropriate Federal agencies, federally recognized Tribes, State and local governments, and other interested parties.

(3) *Proposed Sale Notice (PSN)*: If BOEM decides to proceed with a competitive lease sale within a WEA after completion of its environmental analysis and consultations, BOEM will publish a PSN in the **Federal Register** with a comment period of 60 days. The PSN will describe the areas BOEM intends to offer for leasing, the proposed conditions of a lease sale, the proposed auction format of the lease sale, and the lease instrument, including lease addenda. Additionally, the PSN will describe the criteria and process for evaluating bids in the lease sale.

(4) *Final Sale Notice (FSN)*: After considering the comments on the PSN, if BOEM decides to proceed with a competitive lease sale, it will publish an FSN in the **Federal Register** at least 30 days before the date of the lease sale.

(5) *Bid Submission and Evaluation*: Following publication of the FSN in the **Federal Register**, BOEM will offer the lease areas through a competitive sale process, using procedures specified in the FSN. BOEM will review the sale,

including bids and bid deposits, for technical and legal adequacy. BOEM will ensure that bidders have complied with all applicable regulations. BOEM reserves the right to reject any or all bids and to withdraw an offer to lease an area, even after bids have been submitted.

(6) *Issuance of a Lease*: Following identification of the winning bidder on a lease area, BOEM will notify that bidder and provide the lease documents for signature. BOEM requires a winning bidder to sign and return the lease documents, pay the remainder of its bid, if applicable, and file the required financial assurance within 10-business days of receiving the lease documents. Upon receipt of the required payments, financial assurance, and signed lease documents, BOEM may execute a lease with the winning bidder.

c. Noncompetitive Leasing Process

BOEM's noncompetitive leasing process includes the following steps under 30 CFR 585.231 and 585.232:

(1) *Determination of No Competitive Interest*: If, after evaluating all relevant information, including responses to this RFI, BOEM determines there is no competitive interest in all or a portion of the RFI Area, it may proceed with the noncompetitive lease issuance process. BOEM will determine if the sole respondent who submitted an indication of interest in a particular area intends to proceed with acquiring the lease. If so, the respondent must pay the acquisition fee. After the acquisition fee is paid, BOEM will publish a determination of no competitive interest in the **Federal Register**.

(2) *Review of Lease Request*: BOEM will coordinate and consult, as appropriate, with relevant Federal agencies, federally recognized Tribes, affected State and local governments, and other affected or interested parties in reviewing the noncompetitive leasing request and in formulating lease terms, conditions, and stipulations. BOEM also will complete the appropriate environmental analysis to inform its decision-making.

(7) *Lease Issuance*: After completing its review of the lease request and environmental analysis, BOEM may offer a noncompetitive lease. BOEM requires the respondent to sign and return the lease documents and file the required financial assurance within 10-business days of receiving the lease documents. Upon receipt of the required financial assurance and signed lease

documents, BOEM may execute a lease with the respondent.

Amanda Lefton,

Director, Bureau of Ocean Energy Management.

[FR Doc. 2022-17921 Filed 8-18-22; 8:45 am]

BILLING CODE 4310-MR-P

DEPARTMENT OF THE INTERIOR

Bureau of Ocean Energy Management

[Docket No. BOEM-2022-0030]

Outer Continental Shelf Official Protraction Diagrams and Official Protraction Aliquot Diagrams

AGENCY: Bureau of Ocean Energy Management, Interior.

ACTION: Availability of North American Datum of 1983 Outer Continental Shelf Provisional Official Protraction Diagrams and Provisional Official Aliquot Protraction Diagrams for the Gulf of Mexico.

SUMMARY: Notice is hereby given of the availability of new North American Datum of 1983 (NAD83)-based Outer Continental Shelf (OCS) Provisional Official Protraction Diagrams (OPDs) and Provisional Official Protraction Aliquot Diagrams (OPADs) depicting geographic areas located in the Gulf of Mexico (GOM) and covering the extent of the area included in the "Call for Information and Nominations—Commercial Leasing for Wind Power Development on the Outer Continental Shelf in the Gulf of Mexico."

ADDRESSES: Copies of the OPDs and OPADs are available for download in .pdf format from <https://www.boem.gov/gom83-cadastral-data>.

FOR FURTHER INFORMATION CONTACT: Beth Wenstrom, Chief, Geospatial Services Division, Office of Strategic Resources, at (703) 787-1312 or via email at beth.wenstrom@boem.gov.

SUPPLEMENTARY INFORMATION: The Bureau of Ocean Energy Management (BOEM), in accordance with its authority and responsibility under the OCS Lands Act, is announcing the availability of diagrams that could be used for the description of potential energy and mineral lease sales in the geographic areas that the diagrams represent.

The extent of the currently-published diagram coverage is shown in Figure 1, below.

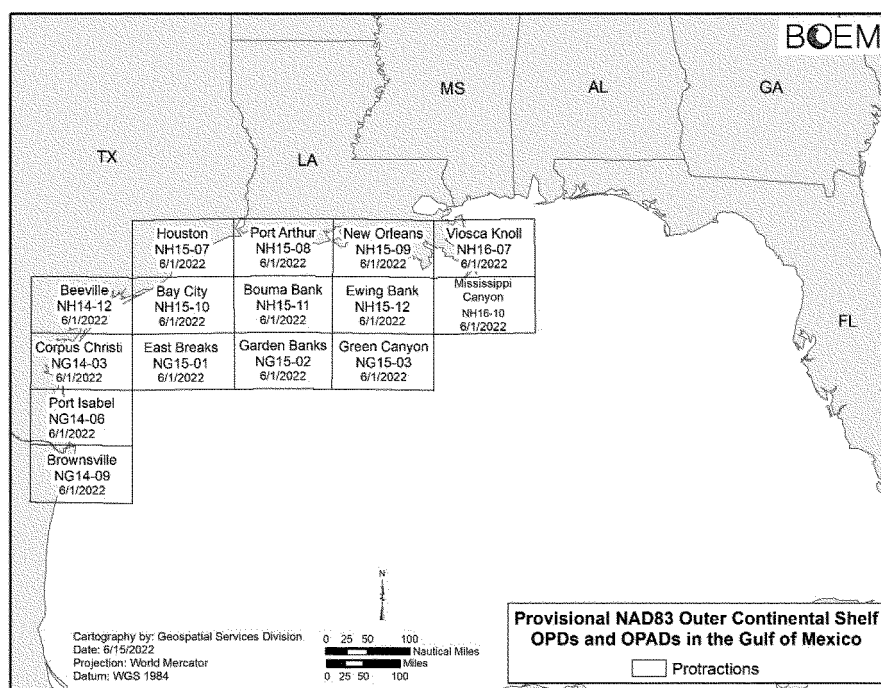


Figure 1

The maps represent the first provisional OPDs and OPADs published by BOEM that reflect Federal waters seaward of the States of Louisiana and Texas in the NAD83 datum. OPDs and OPADs depict the cadastral subdivisions of the OCS that legally define all leasing areas. The diagrams depict areal measurements and offshore boundaries and identify Federal and state land ownership for individual OCS leasing blocks. These provisional OPDs and OPADs represent the approximate locations of the Submerged Lands Act and Limit of "8(g)/8(p) Zone" boundaries. Available diagrams have the latest approval date under the diagram number and may also carry the name of a city, town, or prominent natural feature within it. Further information is provided on the specific OPDs and OPADs.

The provisional diagrams neither supersede nor replace the North American Datum of 1927 OPDs and Leasing Maps (LMs) or Notices to Lessees (NTLs) guidance previously published by BOEM and used for oil and gas leasing (e.g., NTL No. 2009-G29). The provisional OPDs and OPADs described in this notice are for informational purposes only and are published to support a potential future offshore wind lease sale in the GOM. These diagrams will be superseded by official versions in advance of a potential offshore wind lease sale in the GOM.

Provisional Outer Continental Shelf OPDs and OPADs in the Gulf of Mexico

Description—Date (in mm/dd/yyyy Format)

OPD Gulf of Mexico NAD83 Index Map—6/9/2022
 OPD NG14-09 (Brownsville)—6/1/2022
 OPAD NG14-09 (Brownsville)—6/1/2022
 OPD NG14-06 (Port Isabel)—6/1/2022
 OPAD NG14-06 (Port Isabel)—6/1/2022
 OPD NG14-03 (Corpus Christi)—6/1/2022
 OPAD NG14-03 (Corpus Christi)—6/1/2022
 OPD NH14-12 (Beeville)—6/1/2022
 OPAD NH14-12 (Beeville)—6/1/2022
 OPD NG15-01 (East Breaks)—6/1/2022
 OPAD NG15-01 (East Breaks)—6/1/2022
 OPD NG15-02 (Garden Banks)—6/1/2022
 OPAD NG15-02 (Garden Banks)—6/1/2022
 OPD NG15-03 (Green Canyon)—6/1/2022
 OPAD NG15-03 (Green Canyon)—6/1/2022
 OPD NH15-10 (Bay City)—6/1/2022
 OPAD NH15-10 (Bay City)—6/1/2022
 OPD NH15-11 (Bouma Bank)—6/1/2022
 OPAD NH15-11 (Bouma Bank)—6/1/2022
 OPD NH15-12 (Ewing Bank)—6/1/2022
 OPAD NH15-12 (Ewing Bank)—6/1/2022
 OPD NH15-07 (Houston)—6/1/2022

OPAD NH15-07 (Houston)—6/1/2022
 OPD NH15-08 (Port Arthur)—6/1/2022
 OPAD NH15-08 (Port Arthur)—6/1/2022
 OPD NH15-09 (New Orleans)—6/1/2022
 OPAD NH15-09 (New Orleans)—6/1/2022
 OPD NH16-10 (Mississippi Canyon)—6/1/2022
 OPAD NH16-10 (Mississippi Canyon)—6/1/2022
 OPD NH16-07 (Viosca Knoll)—6/1/2022
 OPAD NH16-07 (Viosca Knoll)—6/1/2022

Amanda Lefton,

Director, Bureau of Ocean Energy Management.

[FR Doc. 2022-17853 Filed 8-18-22; 8:45 am]

BILLING CODE 4340-98-P

DEPARTMENT OF THE INTERIOR

Bureau of Ocean Energy Management

[Docket No. BOEM-2022-0041]

Research Lease on the Outer Continental Shelf (OCS) in the Gulf of Maine, Request for Competitive Interest (RFCI)

AGENCY: Bureau of Ocean Energy Management (BOEM), Interior.

ACTION: Requests for competitive interest and public comment.